

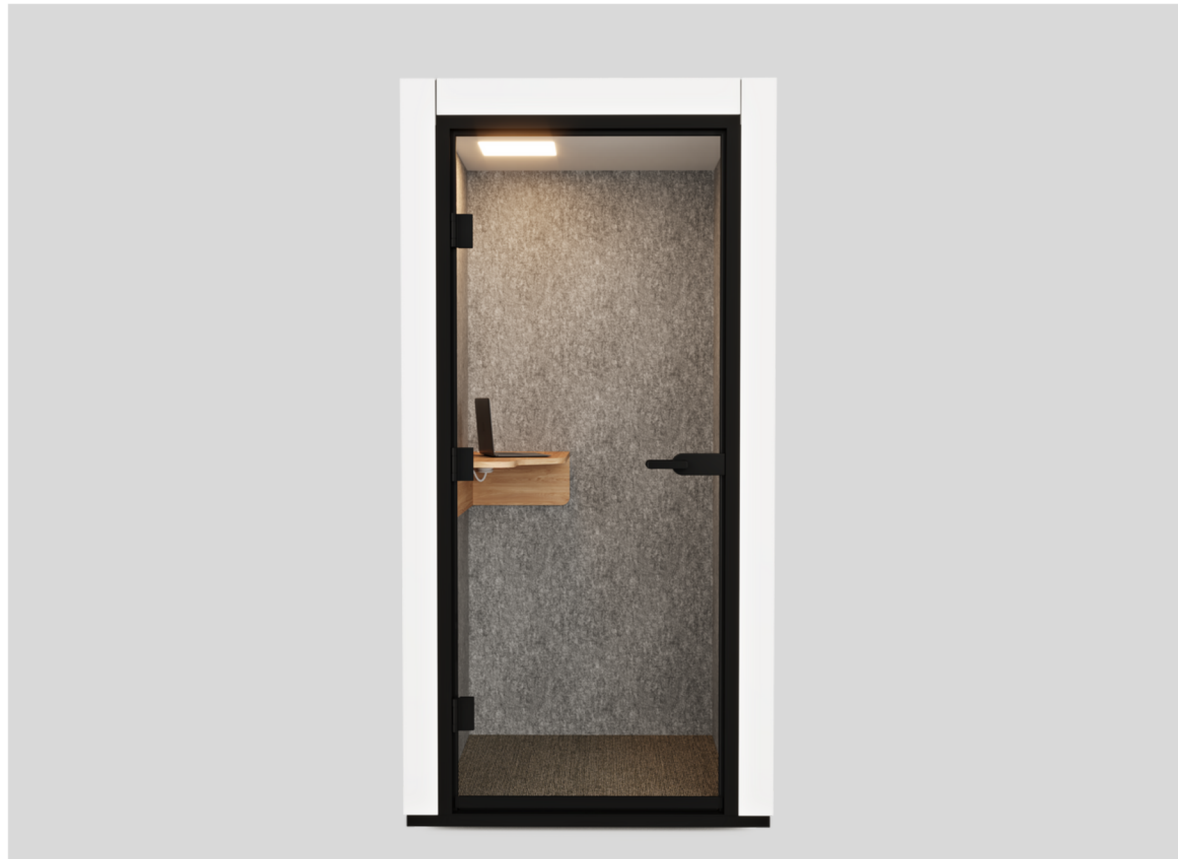


**Call 1**

**JUUNOO**

# Call 1

---



## Features & materials

### ACOUSTIC

30 dB sound reduction helps tune out distractions and maintain privacy.

### VENTILATION

Multi-fan system refreshes air in the pod every minute for a cool and comfy space.

### CONNECTIVITY

Thoughtfully placed AC and USB ports give you all the power you need.

#### EXTERIOR



White

#### DOOR



Black



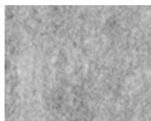
Black

#### TABLE



Oak

#### INTERIOR



Silver

#### CARPET



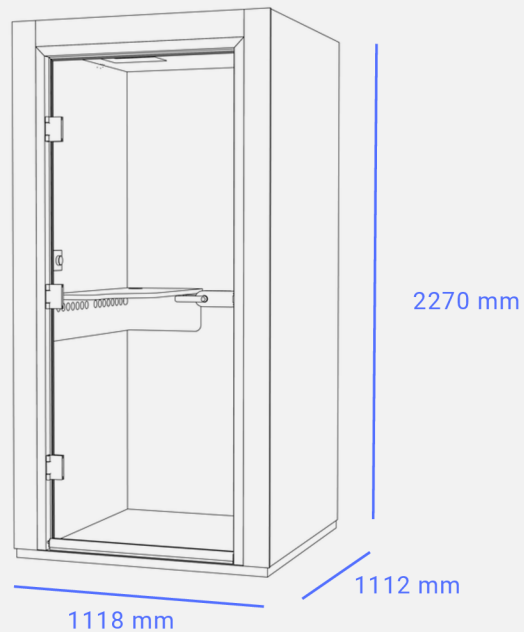
Bob



Joris



Daniel



<b>Acoustics</b>	30 dB
<b>Airflow</b>	Multiple fans refresh air every 60 seconds
<b>Lighting</b>	Adjustable light dimmer up to 700 lm
<b>Power usage</b>	20 W ~ (0.020 kwh) while in use / 1.2 W standby
<b>Power requirements</b>	230V min., grounded plug
<b>Power cord length</b>	2 m
<b>Table outlets</b>	1 power socket, 1 USB-C
<b>Capacity</b>	1 person
<b>Total weight</b>	Gross 465 kg - net 335 kg
<b>Warranty coverage</b>	2 year
<b>Exterior dimensions</b>	(W x D x H) 1118 mm x 1112 mm x 2270 mm
<b>Height tolerance for leveling feet</b>	±12.7 mm
<b>Interior dimensions</b>	(W x D x H) 908 mm x 961 mm x 2088 mm
<b>Doorway</b>	(W x H) 890 mm x 2035 mm
<b>Rotation direction</b>	DIN left
<b>Desktop dimensions</b>	(W x D) 950 mm x 380 mm
<b>Desk height</b>	1060 mm (standing)

# Accessories

---



## **COAT HANGER**

For added convenience, your pod can be fitted with a stylish coat hanger. This way, you always keep your coat or bag within reach.



## **SUSPENSION SYSTEMS**

For extra functionality, your pod can be equipped with a suspension system for monitors up to 50". This way, you effortlessly create a dynamic and interactive workspace.



## **FURNITURE**

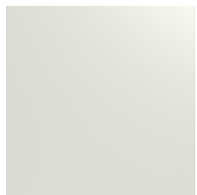
For optimal comfort, it is possible to integrate furniture into your pod. Choose a seating solution that suits your needs and working style.



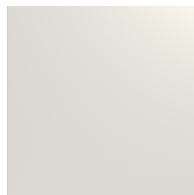
# Customisation

Exterior

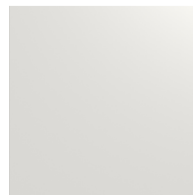
Give your pod a unique look with our wide selection of colours. Choose from a diverse palette to find the perfect match for your space. Want a specific shade that's not in our range? No problem! We also offer the option of personalising your pod in a colour of your choice. Consult your JUUNOO-partner for more information.



Lily White



Front white CST



Front white W03



Seashell



Silicon



Green shadow



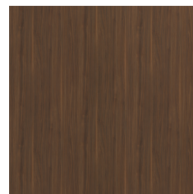
Master oak  
patina greige



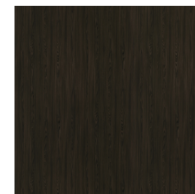
Oslo oak soft beige



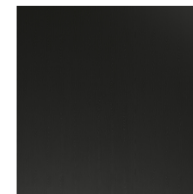
Master oak  
light natural



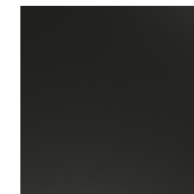
Lorenzo walnut  
medium brown



Dainty oak cafe noir



Elegant black V1A



Elegant black W06



And many more...



**JUUNOO**

+32 (0)56 44 18 90

Blokkestraat 51

B-8550 Zwevegem

Copyright  
© JUUNOO NV